



INTERIOR FLEXIBLE BOTTOM HIGH SPEED FABRIC DOOR



Motor:
Field changeable
universal handing

High cycle,
springless design

Patent-pending
curtain lock

Optional vision
panels

Obstruction
sensors

Patent-pending
breakaway system

Flexible bottom bar
with detachable
bottom seal

PERFECT FOR MANUFACTURING, PHARMACEUTICAL, WAREHOUSE AND DISTRIBUTION FACILITIES

- **Built for safety**
 - Flexible bottom with wireless monitored reversing edge
 - Built-in door stop device
 - In-plane infrared sensors
- **Engineered for high cycles**
 - Springless design requires minimal interruption for maintenance
 - Direct-mounted gear drive minimizes wear and tear
 - Variable frequency drive eliminates sudden jolts from door start/stop
- **Optional vision panels** allow visual access and light
- **Optional programmable LED lighting system**
- **Strutless design** reduces operational noise of the door
- **Built for quick field repair**
 - Patent-pending curtain lock
 - Patent-pending guide, curtain, and breakaway systems
 - Flexible bottom bar with detachable bottom seal for easy replacement and troubleshooting
- **Low maintenance** breakaway design with side impact detection and push button self-repair; plug and play wiring
- **Standard hood** blocks moisture and debris from impeding door operation



INDUSTRY LEADING
COMMERCIAL & INDUSTRIAL SOLUTIONS

MODEL 990 INTERIOR FLEXIBLE BOTTOM HIGH SPEED FABRIC DOOR

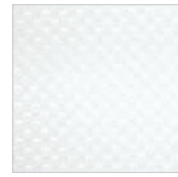
Standard features at a glance

Maximum width	12'
Maximum height	12'
Maximum opening speed	Up to 70"/sec
Maximum closing speed	Up to 40"/sec
Curtain lock	Yes
Breakaway self reset	Yes
Wind load*	Up to 3.0 psf
Curtain material	2 layers of light PVC-coated polyester with 1 layer of polyester weave
Operation	Direct drive motor and gearbox system with field changeable universal handing and door stop safety device
Control panel	Variable frequency drive NEMA 4X cULus listed; Onboard self diagnostic and service reminder; Built-in padlockable fused disconnect
Obstruction safety detection	Infrared sensors mounted in-plane to the door curtain at 18" and 50" - 54" from floor
Reversing safety edge	Wireless reversing edge; flexible bottom bar with detachable bottom seal
Available supply voltages**	110-120V AC 1 PH, 190-207V AC 1PH†, 208-245V AC 1PH, 190-207V AC 3PH†, 208-245V AC 3PH, 456-495V AC 3PH, 575V 3PH† (†requires stand-alone mounted transformer)
Bottom seal	Flexible bottom edge
Hinged guides	Provide easy access for maintenance
Warranty	5-Year Limited on drive motor and gearbox; 1-Year Limited on all other available components

Options

- **Actuation options** – Push button, key switch, pull switch, loop detector, motion detector, treadle switch, radio control. Wireless options available
- **Signaling device options** – Red/green LED warning light, horn/strobe combination, rotating warning light
- **Programmable LED lighting system** – 3' tall light bar with red, yellow, green lighting
- **20" high vision panels** – spaced evenly across width of door

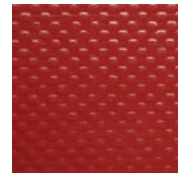
Curtain color options



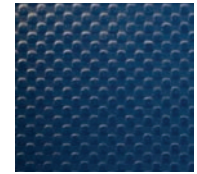
White



Gray



Red



Blue

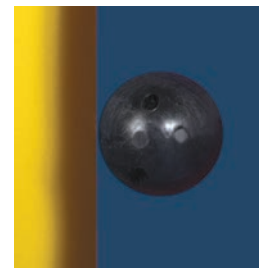


Standard color for guides and bottom bar is yellow. Approximately 200 optional RAL powder coat colors are also available.

Actual colors may vary from brochure due to fluctuation in the printing process. **Always request a color sample from your Overhead Door™ Distributor for accurate color matching.**

* Wind load is the ultimate pressure tested at door width of 12'.

** Single phase available up to 10' doors.



Patent-pending curtain lock allows for easy field repairs.



Flexible bottom bar with detachable bottom seal for easy replacement and troubleshooting.



INDUSTRY LEADING
COMMERCIAL & INDUSTRIAL SOLUTIONS

2501 S. State Hwy. 121 Bus., Suite 200, Lewisville, TX 75067

1-800-929-DOOR • sales@overheaddoor.com

overheaddoor.com

